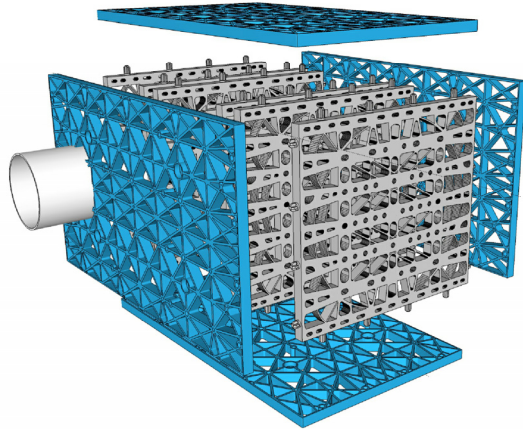


PIPE 6" OR LESS DIAMETER
 USE SNIPS TO MODIFY ECO-RAIN TANK
 LARGE PLATE ONLY TO MATCH PIPE
 DIAMETER, PLACE PIPE/INSPECTION PORT
 TO AVOID CONFLICT WITH INTERNAL
 PLATES. DO NOT CUT HOLE LARGER THAN
 PIPE DIAMETER.

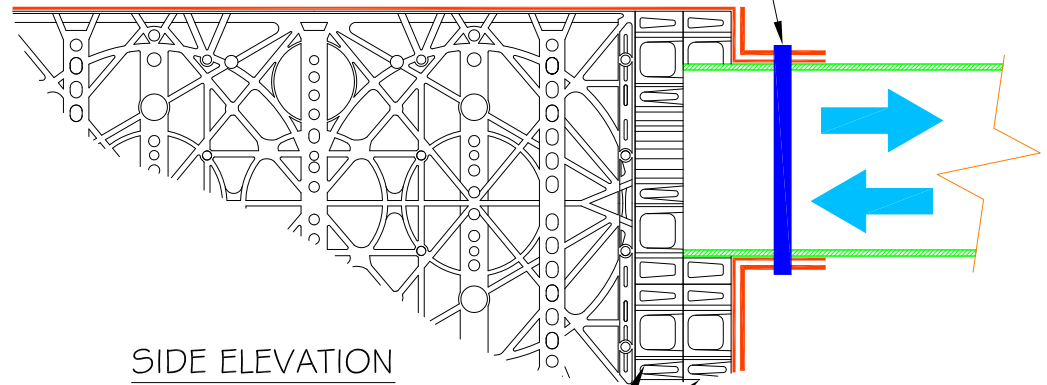


IMPORTANT - ALL WATER ENTERING THE
 ECO-RAIN TANK SYSTEM MUST BE
 FILTERED EITHER THROUGH SOIL OR
 FILTER, DO NOT CONNECT PIPE WITH
 UNFILTERED WATER DIRECTLY INTO
 ECO-RAIN TANK SYSTEM.

CONCEPT LARGE AND SMALL DIAMETER PIPE CONNECTIONS

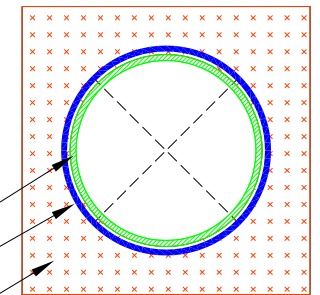
PIPE 8" DIAMETER AND LARGER
 DO NOT CUT HOLE IN TANK

CUT 'X' THROUGH GEOTEXTILE AND
 IMPERMEABLE MEMBRANE IF INCLUDED
 THEN APPLY GEOTEXTILE COLLAR TO
 SECURE FABRIC AND PREVENT SAND,
 SOIL OR DEBRIS FROM ENTERING THE
 SYSTEM, SEE FRONT ELEVATION BELOW



INSTALL ONE LAYER ECO-RAIN ET-1 40 | 2"
 DRAINAGE CELL AGAINST ECO-RAIN TANK
 FACE, MODIFY SECOND ECO-RAIN
 ET-1 40 | 2" DRAINAGE CELL FOR PIPE
 DIAMETER AND INSTALL AGAINST FIRST
 DRAINAGE CELL AND INSERT PIPE

PIPE
 GEOTEXTILE COLLAR
 GEOTEXTILE



NOTE:
 SEE ET-1 2 | 4 FOR ADDITIONAL INFORMATION